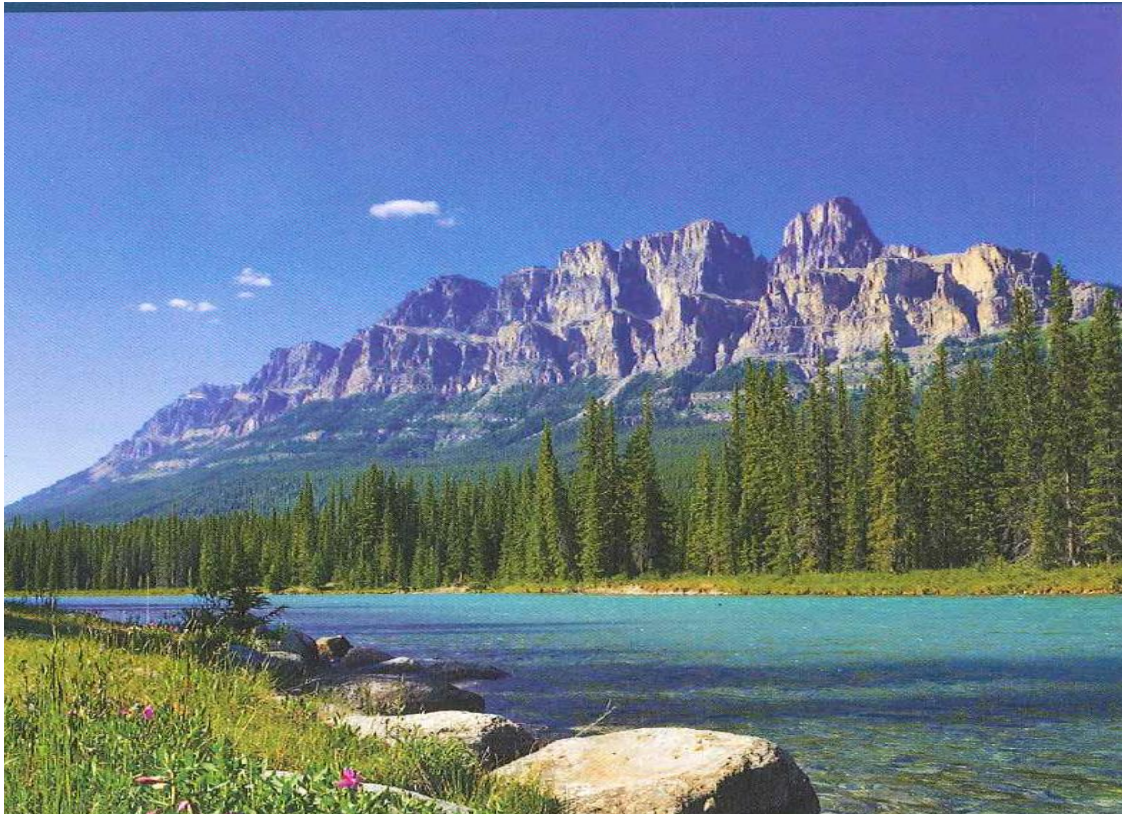




GLOBAL ENGINEERING & TESTING LTD.

COMPANY BROCHURE - 2018



Global Engineering and Testing Ltd.

#15, 3500 – 27th Street NE

Calgary, Alberta T1Y 5E2

Ph: (403) 291-5091 Fax: (403) 291-9729

Email: global.engineering@shaw.ca

Website: www.goglobalfirst.com

TABLE OF CONTENTS

	PAGE
GEOTECHNICAL INVESTIGATIONS, ENGINEERING INSPECTION & MATERIAL TESTING	
A. CALGARY PROJECTS	5
B. OUT OF TOWN PROJECTS	8
ENVIRONMENTAL PROJECTS	9
PHOTOGRAPH GALLERY	11

Serving Western Canada since 1985

Global Engineering and Testing Ltd. has proudly served Western Canada for over 30 years. Our corporate objective has always been to provide a high standard of engineering and technical services to our clients on the basis of efficiency, cost effectiveness and sincerity.

A description of projects Global Engineering has been involved with in 2017 is outlined in this company brochure. Over the past decades, Global Engineering and Testing has participated in a variety of projects including the following:

- slope stability, safety inspection and control, remediation recommendations for deep excavation and natural hill slopes;
- environmental projects including Phase I, II, and III;
- facilities, buildings, Fire Halls, Fire Training Building, EMS, low cost accommodations for the City of Calgary;
- bridges, culverts and different types of retaining walls;
- construction and decommissioning of gas stations;
- city roads, asphalt driveways, airport runway, airport buildings, subdivision roads, underground infrastructures;
- wind farm developments (compaction and concrete testing for quality control) including roads and foundation soil testing;
- high-rise buildings, subsoil investigation, foundation recommendations, engineering inspection and material testing for large oil storage tanks and oil facilities;
- subsoil investigation, foundation inspection and recommendations for McMahan Stadium and bleachers, Canadian Olympic Facilities (1988) including news media housing;
- transmission towers;
- earthwork;
- water reservoirs;
- mining haul road, excavation slope stability, mine facilities;
- compressor stations and battery plants for oil and gas stations;

- indoor air quality testing;
- schools including Junior to Senior High School, and Post-Secondary Schools;
- railroad and site development;
- site development of many housing and condominium subdivisions, including concrete and compaction testing;
- shopping centres;
- geotechnical investigation, inspection, compaction and concrete testing for hospitals and related facilities.

A partial list of our most recent projects is presented on the following pages. Also, photographs from some of our projects are showcased at the end of this brochure.

Geotechnical Investigations Engineering Inspections and Material Testing

(A partial list only)

Calgary Projects

- ◆ The Groves of Varsity High-Rise Condominium Development
Engineering Inspection & Material Testing
5353 Crowchild Trail NW

- ◆ East Village, High Rise Condominium
Geotechnical Investigation, Engineering Inspection & Material Testing
611 7th Avenue SE

- ◆ Beacon Heights Commercial Retail Development
Engineering Inspection & Material Testing
12024 Sarcee Trail NW

- ◆ Holiday Inn
Engineering Inspection & Material Testing
20 Freeport Place NE

- ◆ Sherwood K – 9 School
Geotechnical Investigation, Engineering Inspection & Material Testing
999 Sherwood Blvd NW

Geotechnical Investigations Engineering Inspections and Material Testing (A partial list only)

Calgary Projects (continued)

- ◆ Riverview Long Term Care Centre
Engineering Inspection & Material Testing
2929 26 Ave SE

- ◆ Ascension Catholic Parish
Geotechnical Investigation, Engineering Inspection & Material Testing
1100 Berkshire Blvd NW

- ◆ Horizon Housing Development
Geotechnical Investigation, Engineering Inspection & Material Testing
5005 45 Street SW

- ◆ Panorama Calgary Co-op CRU 37
Geotechnical Investigation, Engineering Inspection & Material Testing
1111 Panorama Blvd. NW

- ◆ Highview Place
Engineering Inspection and Material Testing
8400 Blackfoot Trail SE

Geotechnical Investigations Engineering Inspections and Material Testing

(A partial list only)

Calgary Projects

- ◆ Foothills Soccer Club
Geotechnical Investigation, Engineering Inspection & Material Testing
111 Exploration Avenue SE

- ◆ Bow Valley Square Renovations
Engineering Inspection & Material Testing
205 5th Avenue SW

- ◆ Mountain View Mobile Home Court
Geotechnical Investigation
65th Street SE between 14th and 17th Avenue

- ◆ Parkdale Elementary School Upgrades
Engineering Inspection & Material Testing
728 32nd Street NW

- ◆ St. Mary's High School
Geotechnical Investigation for Retaining Wall
111 – 18th Avenue SW

Geotechnical Investigations Engineering Inspections and Material Testing (A partial list only)

Out of Town Projects

- ◆ Notre Dame School
Engineering Inspection & Material Testing
High River AB

- ◆ Medicine Tree Manor and Westwinds Lodge
Engineering Inspection & Material Testing
High River

- ◆ Our Lady of the Rockies Catholic Church
Geotechnical Investigation
Canmore

- ◆ Agrium Nitrogen Operations Plant
Engineering Inspection & Material Testing
Carseland

Environmental Projects

(A Partial List Only)

Phase I and Phase II Environmental Site Assessments (ESA) for subdivisions, commercial and industrial building sites, and the lands around gas stations are among the environmental projects undertaken this year:

- ◆ Service Station

Phase II ESA and Environmental Remediation

Pincher Creek

- ◆ Phase I ESA

1039 17th Avenue SW, Calgary

- ◆ Phase II ESA

628/630 17th Avenue SW, Calgary

- ◆ Phase I ESA

608 & 602 – 17th Avenue SW, Calgary

- ◆ Phase I ESA and Partial Phase II ESA

615 17th Avenue SW, 1714 & 1716 5A Street SW, Calgary

- ◆ Phase II ESA

221 9th Avenue SE, Calgary

- ◆ Phase I ESA

Nolan Hill Phase 14

Symons Valley Parkway & Shaganappi Trail NW, Calgary

Environmental Projects

(A Partial List Only – continued)

- ◆ Updated Phase I ESA
151 Walden Gate SE, Calgary

- ◆ Phase I ESA
727 1st Avenue SW, Calgary

- ◆ Phase II ESA
727 1st Avenue SW, Calgary

- ◆ Phase I ESA
700 Willowbrook Road NW, Airdrie

- ◆ Phase I ESA
Proposed Days Inn Site
Cross Roads Commercial Park, Balzac

- ◆ Phase I ESA
4230 & 4250 Ogden Road SE, Calgary

- ◆ Updated Phase II ESA
105 & 109 East Lake Crescent, Airdrie

- ◆ Phase I ESA
25240 Township Road 254, MD of Rockyview

**Photograph Gallery
2017 Projects (Partial)**



East Village High Rise Condominium Development with Underground Parkade



Truman Condominium, 17th Ave SW, Calgary



**Groves of Varsity Condominiums, High Rise Buildings
with Underground Parkade, Northwest Calgary**



Highview Place, 8400 Blackfoot Trail SE, Calgary



Ascension Catholic Parish, Calgary



9

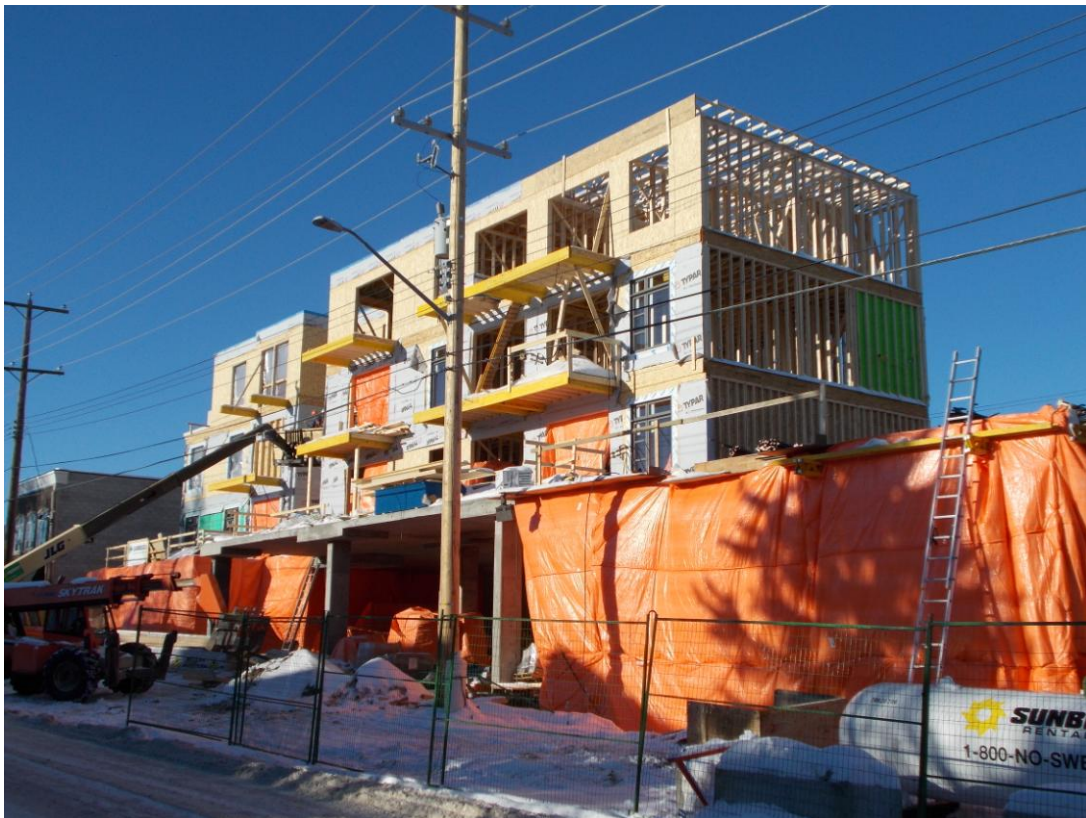
Sherwood K – 9 Catholic School, Calgary



Panorama Calgary Co-op Commercial Building, Calgary



Beacon Heights Condominium Development, Calgary



Infinity Condominium Development, Marda Loop, Calgary



Horizon Housing Condominium Development, SW Calgary



Canadian Brewhouse for Springwood Commercial Development, Cochrane



Springwood Commercial Development, Cochrane



University of Calgary, Barrier Lake Research Centre



University of Calgary, Barrier Lake Research Centre



Riverview Long Term Care Centre, Southeast Calgary



Foothills Soccer Centre, Southeast Calgary



Holiday Inn, 20 Freeport Crescent NE, Calgary

Serving Alberta since 1985.



We provide geotechnical, material testing and environmental engineering services for:

- Government
- School Boards
- Private Industry
- Commercial, industrial and residential projects
- High Rise Buildings

T: 403-291-5091 | **F:** 403-291-9729

Email: global.engineering@shaw.ca

www.goglobalfirst.com

